

001

PANIOTIS GERMASOGEIA

3 bedroom apartment

Total area 95 sq m

Living, dining, kitchen 71.5m x 4.9m

Master bedroom 3.5m x 3.16m

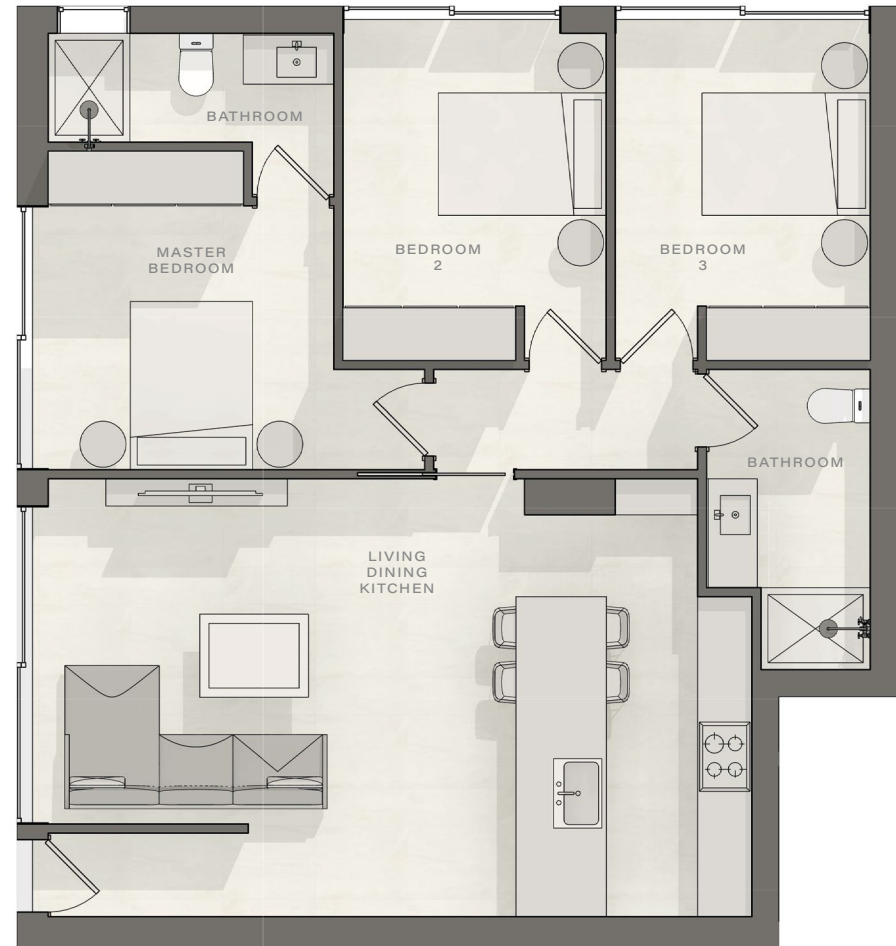
Bedroom 2 2.9m x 3.6m

Bedroom 3 2.8m x 3.6m

Master bathroom 3.15m x 1.2m

Bathroom 2 3.3m x 1.8m

Balcony 34m²



SALES OFFICE

Skyblaze, 132a Griva Digeni, Limassol 3101
Tel +357 25 262 194 info@skyblaze.cy skyblaze.cy

DISCLAIMER

Development images and computer generated images (CGI's) are indicative and may vary. Drawings and illustrations are not to scale and relate only to planning and construction stages which may not accurately reflect the completed scheme. Purchasers are advised to check plot specific dimensions, features and specifications prior to reservation. These particulars have been produced in good faith and are set out as a general guide and do not constitute the whole or part of any contract.